



BHAGAVAD GITA: Chapter 11, Verse 10-11

aneka-vaktra-nayanam anekabhuta-darshanam
 aneka-divyabharanam divyanekodyatayudham
 divya-malyambara-dharam divya-gandhanulepanam
 sarvashcharya-mayam devam anantam vishvato-mukham

aneka—many; vaktra—faces; nayanam—eyes; aneka—many; adbhuta—wonderful; darshanam—had a vision of; aneka—many; divya—divine; abharanam—ornaments; divya—divine; aneka—many; udyata—uplifted; ayudham—weapons; divya—divine; malya—garlands; ambara—garments; dharam—wearing; divya—divine; gandha—fragrances; anulepanam—anoointed with; sarva—all; ashcharya-mayam—wonderful; devam—Lord; anantam—unlimited; vishvatah—all sides; mukham—face

aneka-vaktra-nayanam anekabhuta-darshanam
 aneka-divyabharanam divyanekodyatayudham
 divya-malyambara-dharam divya-gandhanulepanam
 sarvashcharya-mayam devam anantam vishvato-mukham

◆ **TRANSLATION**

BG 11.10-11: In that cosmic form, Arjun saw unlimited faces and eyes, decorated with many celestial ornaments and wielding many kinds of divine weapons. He wore many garlands on His body and was anointed with many sweet-smelling heavenly fragrances. He revealed Himself as the wonderful and infinite Lord whose face is everywhere.

◆ **COMMENTARY**

Sanjay elaborates upon Shree Krishna's divine universal form with the words aneka (many) and anant (unlimited). The entire creation is the body of God's cosmic form, and therefore it contains countless faces, eyes, mouths, shapes, colors, and forms. The human intellect is habituated to grasping things within the limited kernel of time, space, and form. The cosmic form of God revealed unusual wonders, marvels, and miracles in all directions, transcending the limitations of space and time, and thus it could be aptly termed as wondrous.



This Is How Ovarian Cancer Spreads Before Doctors Can Detect

A newly identified interaction between ovarian cancer cells and surrounding abdominal cells helps explain the cancer's unusually fast and aggressive spread.

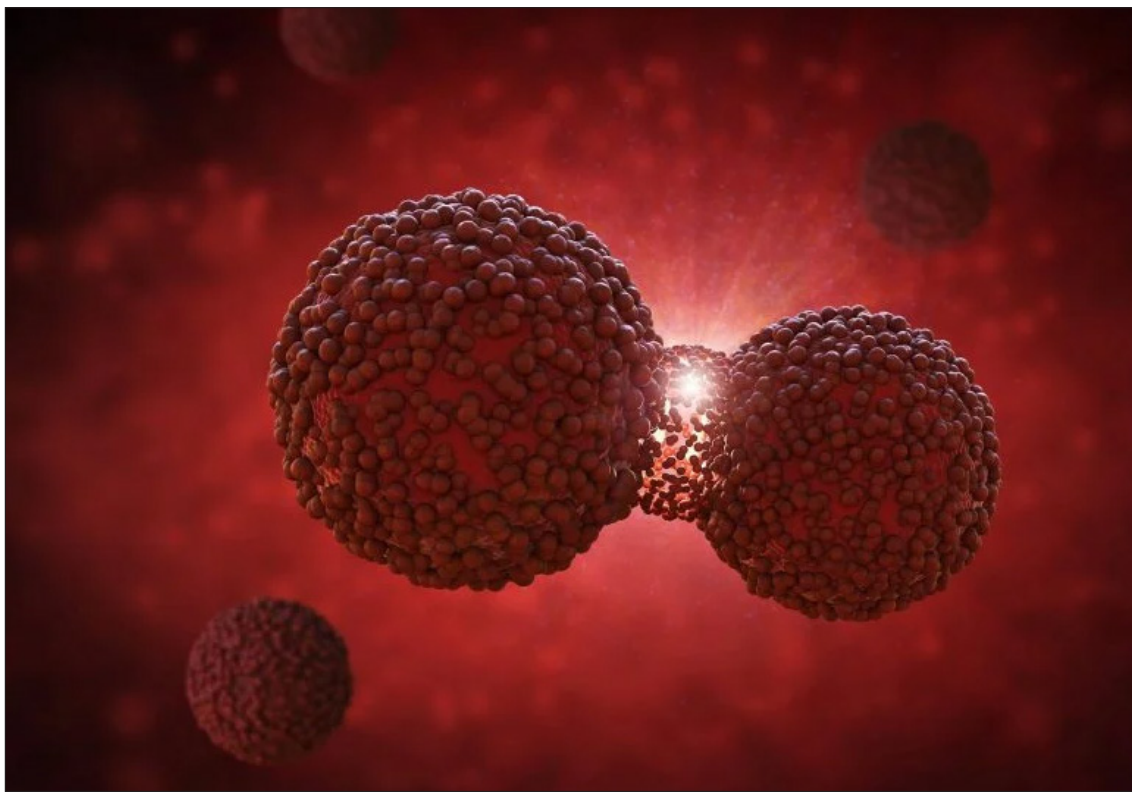
Ovarian cancer is the deadliest gynecologic cancer, largely because it is so often discovered late. Early symptoms can be subtle and easily mistaken for common digestive or hormonal changes, so many people are diagnosed only after the disease has already spread across the abdomen.

A study from Nagoya University, published in Science Advances, points to a key reason the cancer can move so quickly once it reaches that stage. The researchers found that ovarian cancer cells can recruit mesothelial cells, the thin protective cells that normally coat the inside of the abdominal cavity and help organs glide smoothly as the body moves. Instead of remaining a passive lining, these mesothelial cells become active partners in invasion.

When the team examined abdominal fluid from patients, they saw that cancer cells often travel in company. Rather than floating as single cells, they frequently latch onto mesothelial cells and form mixed spheres. In the patient samples, about 60% of these cancer spheres contained recruited mesothelial cells. The cancer cells release a signaling protein called TGF-β1, which alters the mesothelial cells and prompts them to grow sharp, tissue-cutting protrusions.

Invadopodia, spike structures that do the digging for cancer, spike-like structures, do the physical drilling. In these mixed clusters, mesothelial cells do much of the digging into nearby tissue, and cancer cells slip through the openings and pathways they create. Together, the cluster invades faster and resists chemotherapy better than cancer cells alone.

This strategy matches the unusual way ovarian cancer spreads. Cells can break off from a tumor and enter abdominal fluid, where breathing, posture, and everyday movement carry them across surfaces until they find a place to at-



tach—without needing access to the bloodstream.

That differs from cancers such as breast or lung cancer, which often spread by entering blood vessels and traveling through circulation to distant organs. Because blood follows defined routes, doctors can sometimes use blood tests to help monitor those cancers. Ovarian cancer, by contrast, moves through an internal fluid environment with no fixed path. This work suggests the cancer may exploit the abdomen's protective lining by partnering with shed mesothelial cells during this floating stage.

During that period, before cells attach to new organs, the team found that ovarian cancer cells recruit mesothelial cells that have sloughed off the abdominal lining. The two cell types adhere to form hybrid spheres. Mesothelial cells extend invadopodia to penetrate tissue, helping the spheres invade more quickly and withstand chemotherapy once they land on organ surfaces.

Mesothelial Cells Lead Invasion

Outsourcing the hard work of cell invasion

The researchers examined abdominal fluid from ovarian cancer patients using advanced microscopy to watch this process in real time. They confirmed their findings with mouse models and single-cell genetic analysis.

Lead author Dr. Kaname Uno, a former PhD student and current Visiting Researcher at Nagoya University's Graduate School of Medicine, explained that the cancer cells do not need to become more invasive themselves. "They manipulate mesothelial cells to do the tissue invasion work. They undergo minimal genetic and molecular changes and just migrate through the openings that mesothelial cells create."

Dr. Uno worked as a gynecologist for eight years before he pursued research. One of his patients changed his career path. She had clear screening results just three months before doctors found advanced ovarian cancer. Current medical tools failed to detect the cancer early enough to save her life. This motivated Dr. Uno to investigate why ovarian cancer

spreads so rapidly.

This discovery opens new treatment possibilities. Current chemotherapy targets cancer cells but ignores the mesothelial accomplices. Future drugs could block the TGF-β1 signal or prevent the formation of these dangerous partnerships. The research also suggests that doctors could monitor these cell clusters in abdominal fluid to predict disease progression and treatment response.

Reference: "Mesothelial cells promote peritoneal invasion and metastasis of ascites-derived ovarian cancer cells through spheroid formation" by Kaname Uno, Masato Yoshihara, Yoshihiko Yamakita, Kazuhisa Kitami, Shohei Iyoshi, Mai Sugiyama, Yoshihiro Koya, Tomihiro Kanayama, Haruhito Sahara, Satoshi Nomura, Kazumasa Mogi, Emiri Miyamoto, Hiroki Fujimoto, Kosuke Yoshida, Satoshi Tamauchi, Akira Yokoi, Nobuhisa Yoshikawa, Kaoru Niimi, Yukihiro Shiraki, Jonas Sjölund, Hidenori Oguchi, Kristian Pietras, Atsushi Enomoto, Akihiro Nawa, Hiroyuki Tomita and Hiroaki Kajiyama, 6 February 2026, Science Advances.

Word of the Day

DECRY
 verb dih-KRY

What It Means
 To decry something is to express strong disapproval of it.
 // The editorial decried the shuttering of the movie theater, which has been a local landmark for many years.

DECRY IN CONTEXT

"Twenty years ago, I wrote a book about the branding of youth culture called Branded: The Buying and Selling of Teenagers. As a parent, I have come to understand that raising a child who rejects luxury goods and influencer-touted lip gloss is harder than raising a child who will eagerly decry the concept of capitalism at the dinner table." — Aliissa Quart, LitHub.com, 12 May 2025

Decry has several synonyms in English, among them disparage and belittle. Decry suggests an open condemnation that makes it the best choice for cases in which criticism is not at all veiled. The forthrightness expressed by the word is an echo from its ancestry: decry was borrowed in the 17th century from the French verb *décrier*, meaning "to discredit, to lower in honor or esteem," and the crier in that word is related to the Anglo-French *crier*, source of the English verb *cry*, the oldest meaning of which is "to utter loudly; shout."

Did You Know?

Is it your Birthday Today?

APRIL 10

Governed by number 1 and the Sun. You are active, dynamic, authoritative, brilliant and a talented person. You always welcome new ideas and thoughts, but you need to check your tendency to behave extravagant and stubborn at times. Your coming year promises many new surprises and rewards for you. Your long desires are likely to be fulfilled this year. New sources of income will improve your financial position and boost your confidence. Journeys undertaken for work purpose would be beneficial and highly rewarding. Investment in a house and selected stocks recommended. Later in the year a distant trip maybe overseas bring new opportunities for growth and a chance to meet old associates. Legal matters are likely to be extended for much longer than expected and also prove highly expensive. Children will win laurels in their respective fields and will be supportive and understanding towards you. The months of January, May, July and November will bring prosperity.

SUDOKU PUZZLES

SOLVE THE PUZZLE AND GET HANDSOME REWARDS. SEND YOUR SOLUTIONS AT: EARTHNEWSROOM@GMAIL.COM

1	9	4	6	2		
	7	5	2	1	4	
	2	1	9			
2	4	1	7			
	3	2	9	5	8	
		6	4	5	2	
		4	5	9		
4	5	7	1	6		
	8	9	6	4	7	

SOLUTION OF PREVIOUS PUZZLE

9	4	8	1	3	2	5	6	7
5	1	2	4	7	6	3	9	8
6	7	3	8	9	5	2	1	4
3	8	9	7	5	1	6	4	2
4	2	7	6	8	9	1	3	5
1	5	6	2	4	3	7	8	9
2	9	5	3	6	8	4	7	1
7	3	1	9	2	4	8	5	6
8	6	4	5	1	7	9	2	3

STARS & PLANETS



■ **ARIES:** Group activities, perhaps with a social, ecological, or humanitarian focus, could take place today somewhere in your neighborhood, Aries. You might decide to attend with your romantic partner. You could encounter some friends in the process, and all of you could well be caught up in the excitement generated by those in the spotlight.

■ **TAURUS:** Your values could undergo a complete turnaround today, Taurus. Recent developments in the world, your community, among your circle of friends, and within you could make you realize, like it or not, you and everyone around you is going through a transformation. This might be a little disconcerting, but it's a positive development.

■ **GEMINI:** Spiritual and psychic matters come to the forefront today, Gemini. You could be greatly inspired to express yourself creatively. You could also be quite surprised at the wisdom you find within yourself. A gathering of friends, perhaps for the purpose of discussing metaphysical subjects, could bring this to your attention so blatantly that it becomes hard to ignore. Don't cling to the shore. Flow with the current.

■ **CANCER:** Are you contemplating a move of some kind, Cancer? Perhaps you're thinking about relocating to be closer to members of a group with which you're affiliated. You might also be considering a move to a community where spiritual and metaphysical values are not only discussed but also lived. Make a list of your options, if that helps. You're in a transitional period right now. You need to be practical.

■ **LEO:** Communication with friends, siblings, and neighbors should be open, congenial, and supportive today, Leo. A gathering could open the door to new friendships, interesting discussions, and other group activities that you might enjoy. The only downside could involve mental overload. You might learn so much today that you can't keep track of it all.

■ **VIRGO:** Career matters couldn't be going better right now, Virgo, especially if you're in one of the communication fields, including writing, publishing, teaching, the Internet, or mass media. Your financial situation is probably improving very quickly, and you're making contact with congenial, intriguing people who share your interests.

■ **LIBRA:** Have you been planning a trip by air, Libra, perhaps to a distant place associated with a specific spiritual tradition? Warm places like Egypt, Mexico, or Israel could be especially appealing now. You could be going with a group of friends. If you haven't been considering such a journey, think about it. You might receive some surprising insights and revelations from such a trip. Start planning it now.

■ **SCORPIO:** Some vivid, inspiring, and intense dreams or visions could come your way today, Scorpio. They could involve paranormal figures, such as angels. Make sure you keep a record of them, as your higher self is trying to tell you something. Make a list of all the images you can remember and analyze what these images symbolize to you. You could come up with some profound insights about the world and yourself.

■ **SAGITTARIUS:** Love and romance should be flying high for you now, Sagittarius. If you're single, you could soon form an incredible relationship. If you're already involved, the spiritual and emotional bonds between you and your beloved should grow by leaps and bounds. The lines of communication are wide open. Make use of them and you may find the kind of love of which most people can only dream.

■ **CAPRICORN:** You should be feeling physically strong, healthy, and energetic today, Capricorn, although you could also be a little lightheaded. You could experience the sensation of wandering around in a daze with your feet on the ground and your head in the clouds. Achieving balance won't be easy, but you should be able to manage it today. Concentrate on activities that involve spiritual or imaginative faculties today.

■ **AQUARIUS:** In future years, you might remember today as one of the best days of your life, Aquarius. Romance should be going beautifully. You could exchange deeply felt words of love with your partner. The future looks bright, and you should be full of enthusiastic plans for pursuing what you really want to do. You should also be feeling especially strong, energetic, healthy, and ready to try anything. A journey could be coming up soon.

■ **PISCES:** Happiness reigns in the home as friends and family members gather for a long-awaited reunion, Pisces. Or you could be hosting a gathering of friends and acquaintances interested in the arts or psychic or metaphysical matters. Discussions should be intense but fascinating nonetheless. A young visitor could come up with some unexpected insights and revelations that blow everybody away.